

H2Teesside Project

Planning Inspectorate Reference: EN070009

Land within the boroughs of Redcar and Cleveland and Stockton-on-Tees, Teesside and within the borough of Hartlepool, County Durham

Document Reference: 2.6 Indicative Hydrogen Production Facility and Above Ground Installations Plan

The Infrastructure Planning (Applications: Prescribed Forms and Procedure) Regulations 2009 - Regulation 5(2)(o)

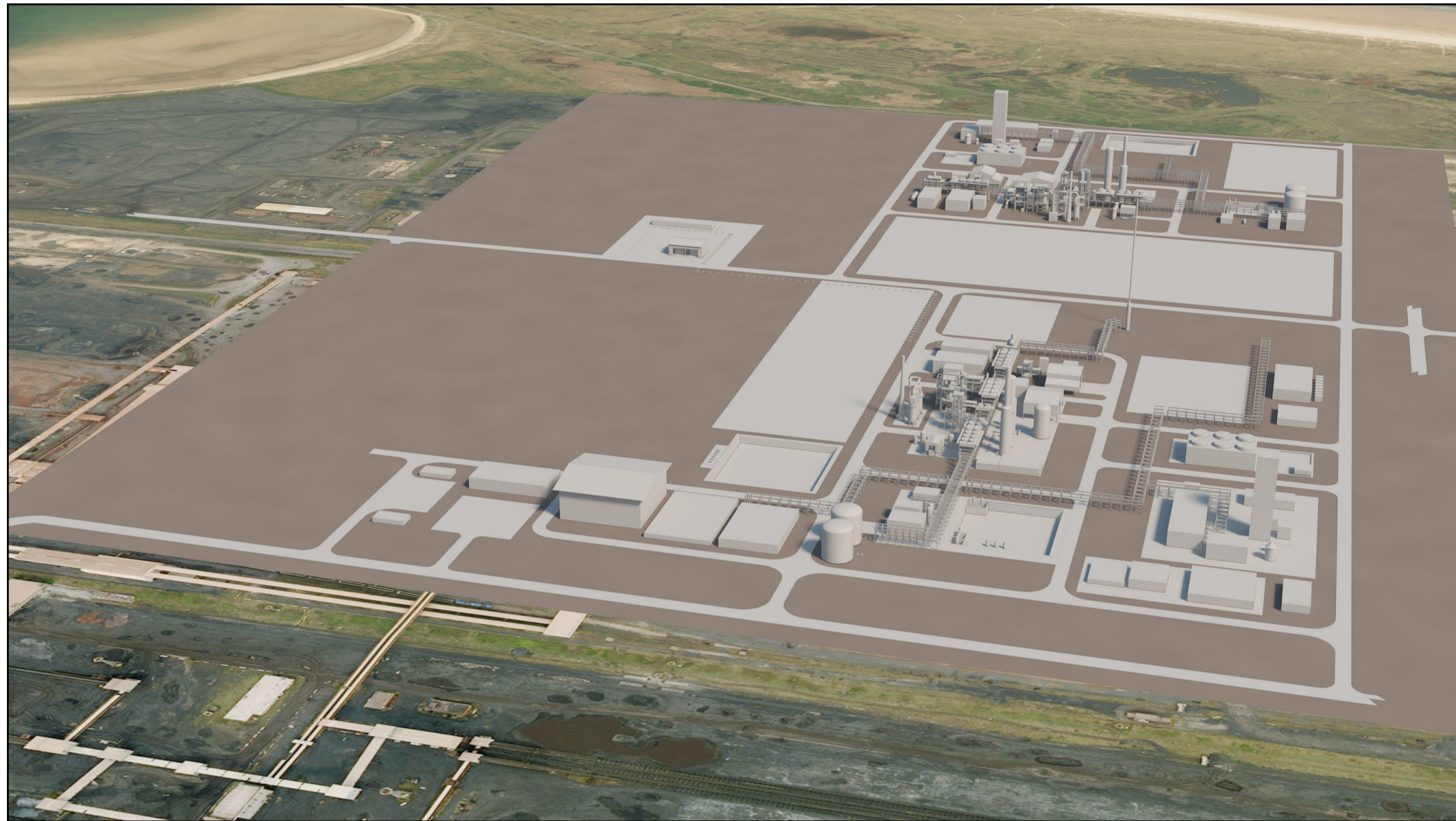


Applicant: H2 Teesside Ltd

Date: March 2024

DOCUMENT HISTORY

DOCUMENT REF	2.6		
REVISION	0		
AUTHOR	MARYSE BUOT		
SIGNED	MB	DATE	22.03.24
APPROVED BY	JORDAN LEWIS		
SIGNED	JL	DATE	22.03.24



Isometric View (3D)



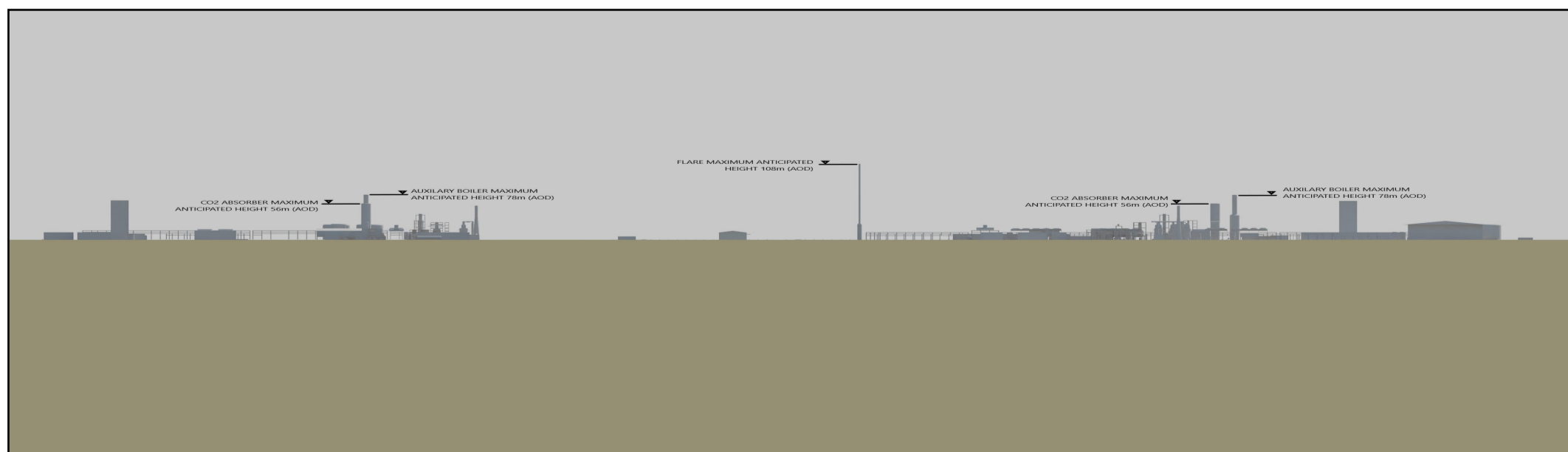
Elevation Looking North



Elevation Looking East



Elevation Looking South



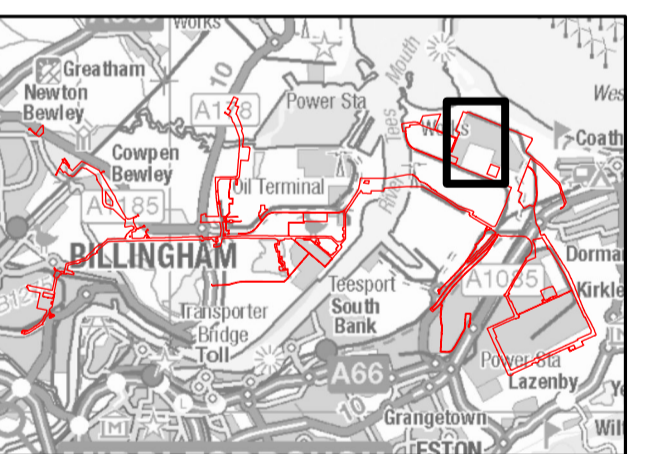
Elevation Looking West



AECOM Limited
100 Embankment,
Cathedral Approach,
Manchester, M3 7FB
www.aecom.com

- Order Limits
- Plot Plan
- Work No. 1 - Carbon Capture Enabled Hydrogen Production Facility
- 1 Air Separation Unit Cold Box
- 2 Auxiliary Boiler
- 3 Auxiliary Boiler Stack
- 4 High Pressure and Low Pressure Flash Vessels
- 5 CO₂ Absorber Column
- 6 Surface Water Drainage Pond
- 7 Start-up Fired Heater Stack
- 8 Flare Stack
- 9 Auxiliary Boiler Stack
- 10 Auxiliary Boiler
- 11 Start-up Fired Heater Stack
- 12 High Pressure and Low Pressure Flash Vessels
- 13 CO₂ Absorber Column
- 14 Surface Water Drainage Pond
- 15 Air Separation Unit Cold Box

Infrastructure Planning
(Applications: Prescribed Forms and Procedure) Regulations 2009 Regulation 5(2)(o).



NOTES

- 1: Reproduced from Ordnance Survey digital map data © Crown copyright 2024. All rights reserved. License number 0100031673.
- 2: Contains Ordnance Survey Data © Crown Copyright and database right 2024.

APPLICATION REFERENCE

H2T_March24_DCO_2.6_Rev0

ISSUE PURPOSE

FOR DCO APPLICATION

PROJECT NUMBER

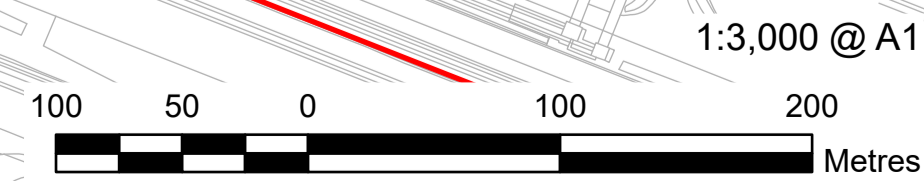
60689030

DRAWING TITLE

Indicative Hydrogen Production Facility and Above Ground Installations Plan

DRAWING NUMBER

Drawing 1 of 4



This drawing has been prepared for the use of AECOM's client. It may not be used, modified, reproduced or relied upon by third parties, except as agreed by AECOM or as required by law. AECOM accepts no responsibility, and denies any liability whatsoever, to any party that uses or relies on this drawing without AECOM's express written consent. Do not scale this document. All measurements must be obtained from the stated dimensions.



PROJECT

H2Teesside DCO

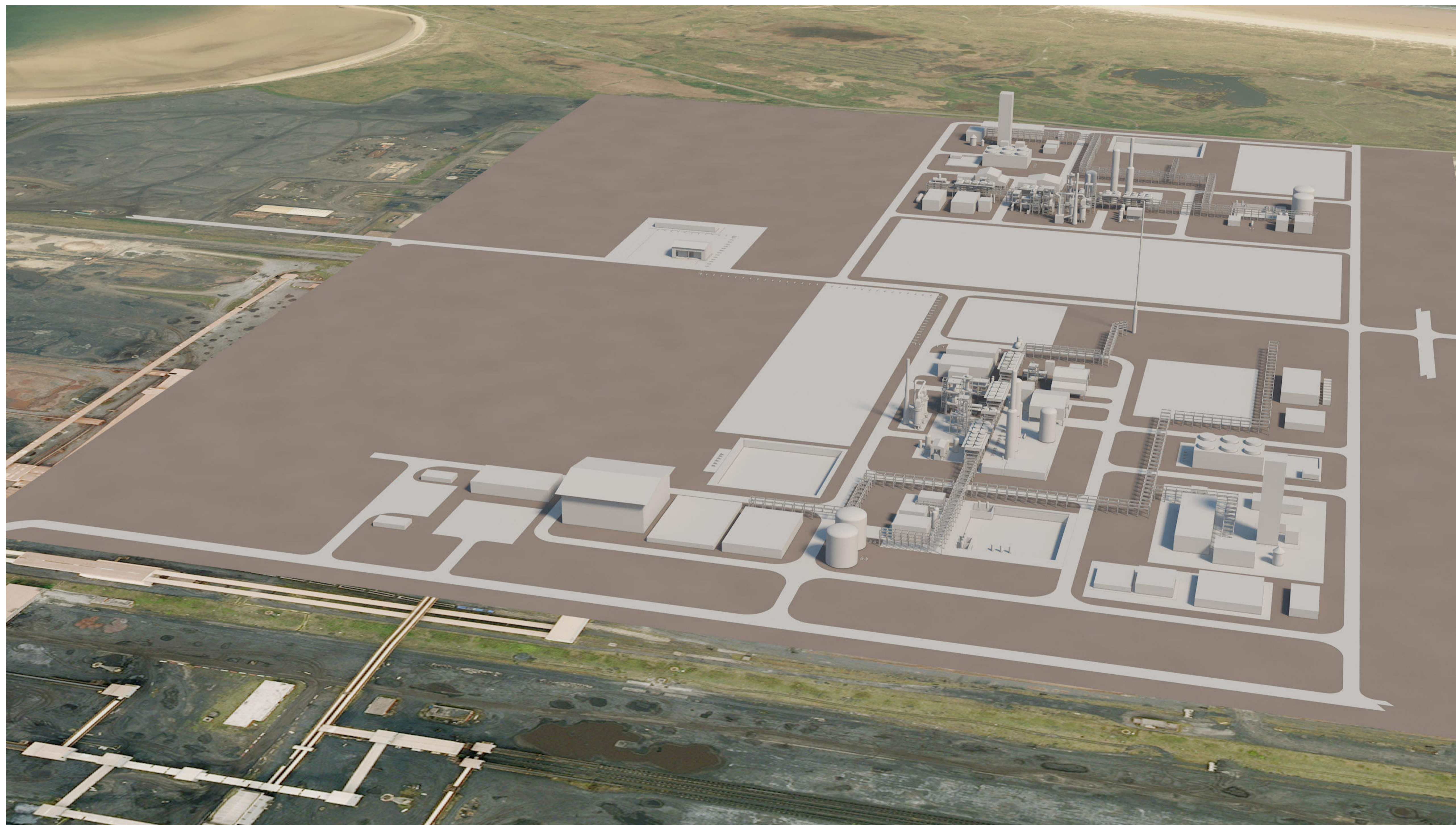
APPLICANT



CONSULTANT

AECOM Limited
100 Embankment,
Cathedral Approach,
Manchester, M3 7FB
www.aecom.com

LEGEND



This drawing has been prepared for the use of AECOM's client. It may not be used, modified, reproduced or relied upon by third parties, except as agreed by AECOM or as required by law. AECOM accepts no responsibility, and denies any liability whatsoever, to any party that uses or relies on this drawing without AECOM's express written consent. Do not scale this document. All measurements must be obtained from the stated dimensions.

**Infrastructure Planning
(Applications: Prescribed Forms
and Procedure) Regulations 2009
Regulation 5(2)(o).**

APPLICATION REFERENCE

H2T_March24_DCO_2.6_Rev0

ISSUE PURPOSE

FOR DCO APPLICATION

PROJECT NUMBER

60689030

DRAWING TITLE

Indicative Hydrogen Production
Facility and Above Ground
Installations Plan

DRAWING NUMBER

Drawing 2 of 4



APPLICANT



CONSULTANT

AECOM Limited
100 Embankment,
Cathedral Approach,
Manchester, M3 7FB
www.aecom.com

LEGEND



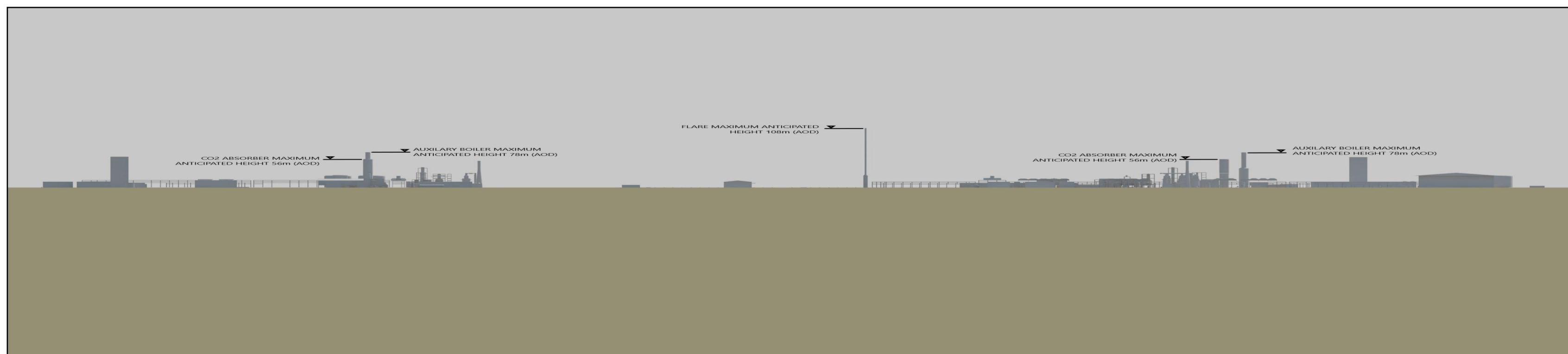
Elevation Looking North



Elevation Looking East



Elevation Looking South



Elevation Looking West

This drawing has been prepared for the use of AECOM's client. It may not be used, modified, reproduced or relied upon by third parties, except as agreed by AECOM or as required by AECOM or as required by law. AECOM accepts no responsibility, and denies any liability whatsoever, to any party that uses or relies on this drawing without AECOM's express written consent. Do not scale this document. All measurements must be obtained from the stated dimensions.

**Infrastructure Planning
(Applications: Prescribed Forms
and Procedure) Regulations 2009
Regulation 5(2)(o).**

APPLICATION REFERENCE

H2T_March24_DCO_2.6_Rev0

ISSUE PURPOSE

FOR DCO APPLICATION

PROJECT NUMBER

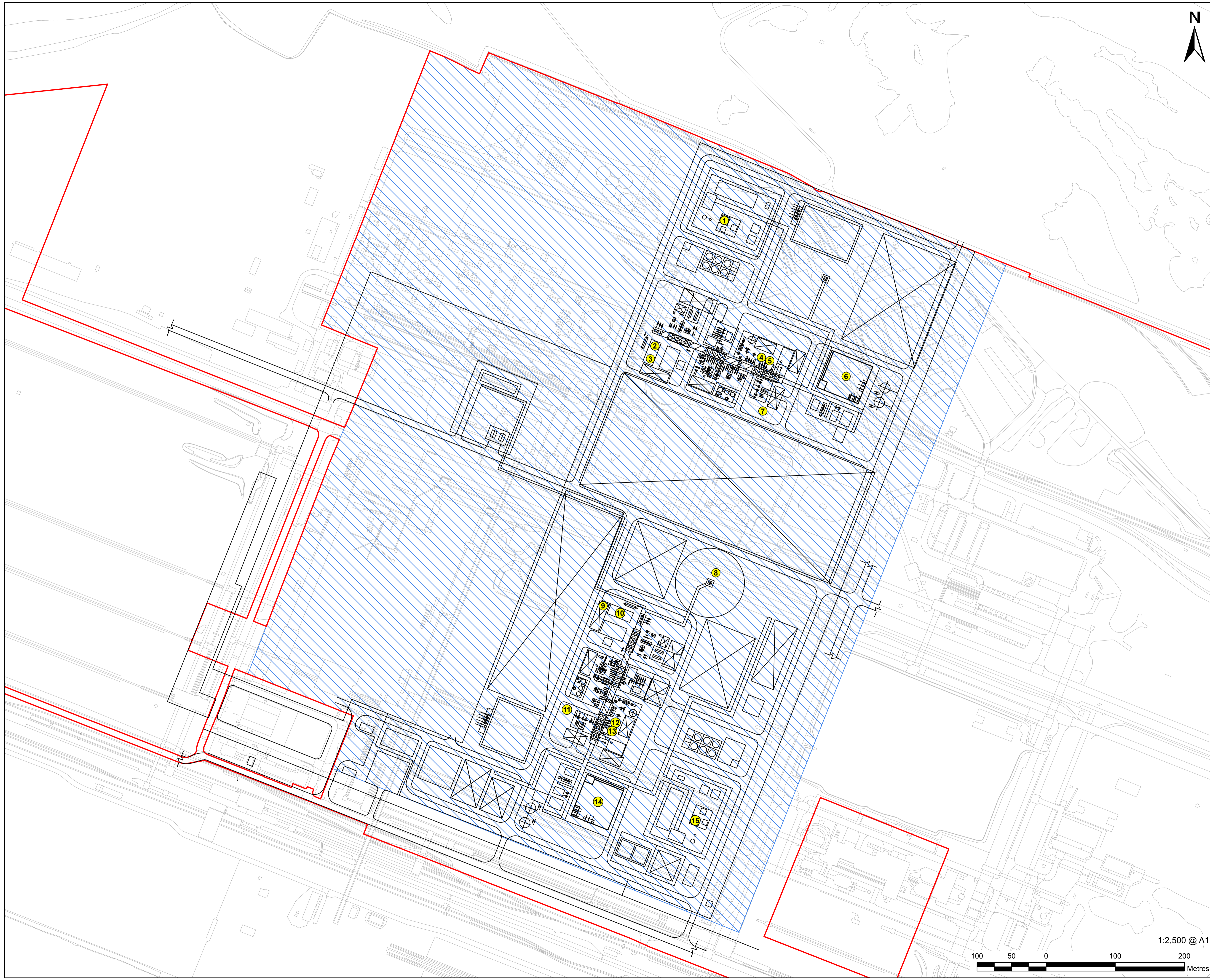
60689030

DRAWING TITLE

Indicative Hydrogen Production
Facility and Above Ground
Installations Plan

DRAWING NUMBER

Drawing 3 of 3

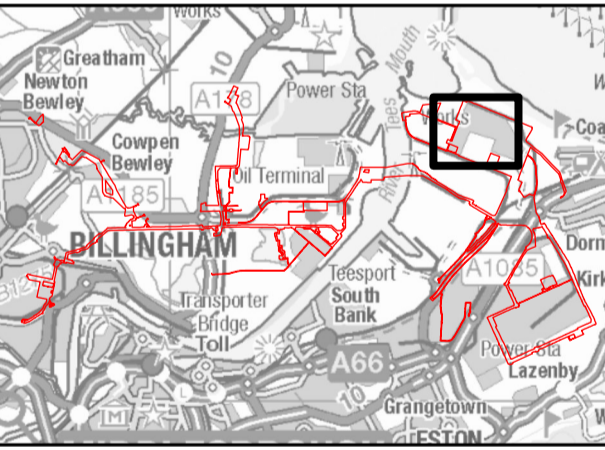


LEGEND

- Order Limits
- Plot Plan
- Work No. 1 - Carbon Capture Enabled Hydrogen Production Facility

- 1 Air Separation Unit Cold Box
- 2 Auxiliary Boiler
- 3 Auxiliary Boiler Stack
- 4 High Pressure and Low Pressure Flash Vessels
- 5 CO₂ Absorber Column
- 6 Surface Water Drainage Pond
- 7 Start-up Fired Heater Stack
- 8 Flare Stack
- 9 Auxiliary Boiler Stack
- 10 Auxiliary Boiler
- 11 Start-up Fired Heater Stack
- 12 High Pressure and Low Pressure Flash Vessels
- 13 CO₂ Absorber Column
- 14 Surface Water Drainage Pond
- 15 Air Separation Unit Cold Box

**Infrastructure Planning
(Applications: Prescribed Forms
and Procedure) Regulations 2009
Regulation 5(2)(o).**



NOTES

- 1: Reproduced from Ordnance Survey digital map data © Crown copyright 2024. All rights reserved. License number 0100031673.
- 2: Contains Ordnance Survey Data © Crown Copyright and database right 2024.

APPLICATION REFERENCE
H2T_March24_DCO_2.6_Rev0

ISSUE PURPOSE
FOR DCO APPLICATION

PROJECT NUMBER
60689030

DRAWING TITLE
Indicative Hydrogen Production
Facility and Above Ground
Installations Plan

DRAWING NUMBER
Drawing 4 of 4

1:2,500 @ A1



This drawing has been prepared for the use of AECOM's client. It may not be used, modified, reproduced or relied upon by third parties, except as agreed by AECOM. AECOM accepts no responsibility, and denies any liability whatsoever, to any party that uses or relies on this drawing without AECOM's express written consent. Do not scale this document. All measurements must be obtained from the stated dimensions.